

# ResCoat Coating

-better erosion resistance & improved crucible performance

## Prime Features

- Exceptional erosion resistance
- High non-wettability leading to low dross adhesion
- Low coating thickness (Fig 2)
- Low porosity, high density coat due to Nanoscaled ingredients

## Applications

- Copper and copper alloys melting using fluxes
- Precious metal refining
- Zinc distillation

## Usage Instructions

- All types of crucibles
- All types of furnaces
- Installation and pre-heating procedures of coated crucibles remain unchanged

## Physical & Technical Properties

- Colour: Grey
- Max. application temperature: 1600°C

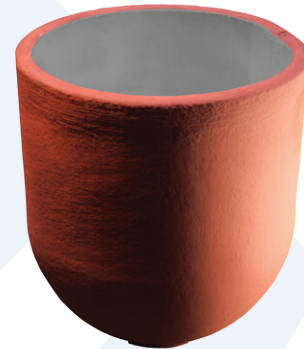


Fig.1: ResCoat coated crucible

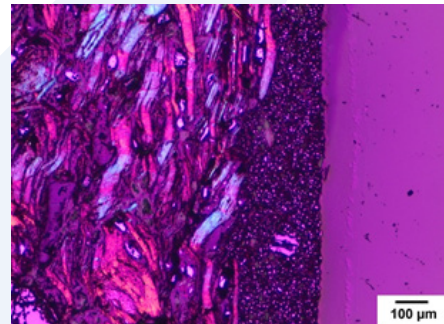


Fig.2: ResCoat Coating under the microscope

## Quality

ResCoat coated crucibles are manufactured from premium grade raw materials under an ISO 9001:2015 quality management system.

For more information, contact us today.

Please note that all values quoted are based on laboratory tests and may not reflect actual results. These values are not guaranteed in anyway whatsoever and should only be treated as indicative and for guidance only. Please consult your local provider for a personalised recommendation according to your custom application. 04.2014